



www.SonyEricsson.com

### GC79 Features

#### General

- PC Card Type II
- Integrated antenna, 15 mm extended
- Always available in your laptop

#### Fax

- Class 2\*, group 3, 4, 9.6 kb/s

#### SMS

- Supports concatenated SMS
- Supports SMS over GPRS
- Supports Unicode\*\* character set

#### Supported operating systems

- Windows 98SE/Me/2000/XP/ Pocket PC 2002.

#### GC79 Manager

- Monitor with continuous signal strength update, SMS etc.
- SIM Telephone book editor
- Telephony/Modem settings
- Connection Wizard with pre-stored Network parameters

PC software upgrades available on support page.

#### Compatibility

- Windows compatible applications e.g. Outlook, Remote Access and MS Fax.

\* Network dependent

\*\* Incl. Chinese

### GC79 Technical Specification

General: PC Card 32-bit Cardbus, 3.3V  
 GSM Band: 900(2W), 1800 (1W) and 1900(1W) MHz  
 GPRS: Class 10  
 CSD: GSM Data 9.6 & 14.4 kb per slot (1+1 down/uplink)  
 Data: TCP/IP version 4  
 SIM Card: Supports 3 & 5 Volt  
 Error Correction: End to End MNP 2-4; LAPM (V.42) & RLP  
 Compression: MNP 5 & V.42bis. TCP/IP Header Compression  
 SIM Toolkit: Class 2 without Call Control  
 ME SIM Lock: Yes, possible  
 Drivers: Microsoft® WHQL, NDIS based  
 Multi channel: 3 channels  
 Environment: Operating 0-55°C, Storage -10-65°C  
 Power consumption: Max 800 mA  
 Certifications: CE, FCC, GCF, PTCRB, Canadian and WiFi  
 Maximum Data Speeds: (before compression)  
 WLAN: IEEE 802.11b supporting up to 11 Mbps.  
 Support for EAP-SIM authentication.

#### GPRS

#### HSCSD

No. slots supported		CS-1	CS-2	CS-3*	CS-4*	9.6	14.4
		kbps	kbps	kbps	kbps	kbps base	kbps base
4 +1	Receive	36.2	53.6	62.4	85.6	38.4	57.6
	Send	9.05	13.4	15.6	21.4	9.6	14.4
3 +2	Receive	27.15	40.2	46.8	64.2	28.8	43.2
	Send	18.1	26.8	31.2	42.8	19.2	28.8

\*Coding Schemes (CS) 3 & 4 supported by GC79 but not yet available in any live network



# GC79



## Sony Ericsson

Sony Ericsson Mobile Communications AB  
 SE-22188 Lund, Sweden  
 Printed in February 2003, EN/LZT 123 7459 R1A

Subject to change without prior notice.

## Sony Ericsson

# GC79 GPRS/Wireless LAN PC Card – best of two worlds



When you're travelling on business you need flexibility and speed. Sony Ericsson's GC79 gives you both. With GPRS/HSCSD for global access and WLAN for a fast local connection, it's the best of two worlds – and the best way to stay connected while on the road.

## Rapid Connection!

The GPRS/Wireless LAN PC Card is the fastest, most flexible way to stay in contact with the office when you're on the move. It provides you with maximum speeds of up to 11 Mbps in public hotspots, as well as in areas where Wireless LAN networks are available. That means airport lounges, offices, home – soon even airplanes!

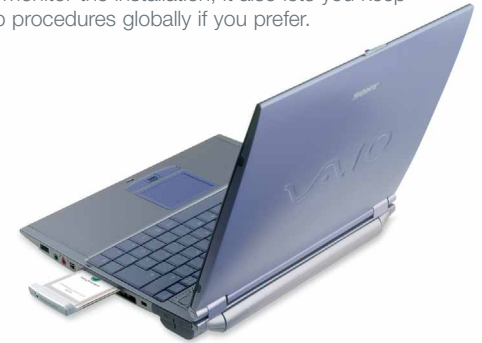
## Global GSM/GPRS access and fast local connection

The GC79 lets you easily select between WLAN and GPRS/HSCSD, depending on what's available. That way you can choose the quickest possible access to your company network or the Internet. With global coverage and top performance, it's an all-in-one card that gives you the best of two worlds.

Since the GC79 is a triple band PC Card, it offers access on all five continents. And because it's powered by your laptop, no extra chargers or cables are needed. That makes it the perfect solution when the only thing as important as travelling light is staying connected.

## Easy installation and Set-up

The GC79 Manager that comes with your PC Card provides a user-friendly interface that gets you up and running in no time. Not only does it monitor the installation, it also lets you keep the same dial-up procedures globally if you prefer.

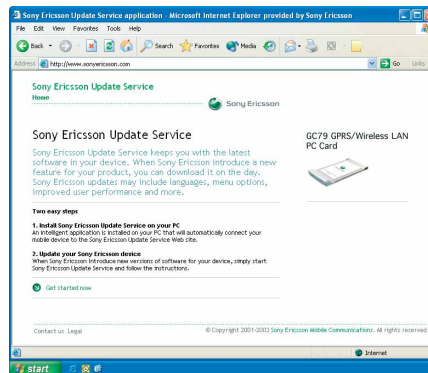


## WLAN benefits

Wireless LAN 802.11b, utilized by the GC79, is a wireless radio technology with a tremendous market growth. Already the most frequently used WLAN standard worldwide, it provides the best possible performance with a distance of typically 100 m (300 ft) from the access point. The Sony Ericsson GC79 GPRS/Wireless LAN PC Card is WiFi certified and supports EAP-SIM authentication, which lets you easily access public hotspots, when supported by the network.

## Global Customer Support

No matter where you are, Sony Ericsson's global customer support network provides instant on-line service. Just access the support pages via the Internet and download the latest software, keeping your PC Card and laptop at the cutting edge.



Download upgrade software will be available at:  
[www.SonyEricsson.com](http://www.SonyEricsson.com)

## Always available

Powerful but discreet, the GPRS/Wireless LAN PC Card fits neatly into the PC Card slot of any PC laptop. Best of all, its integrated antenna lets you keep it in your laptop at all times, giving you convenient, instant access.

